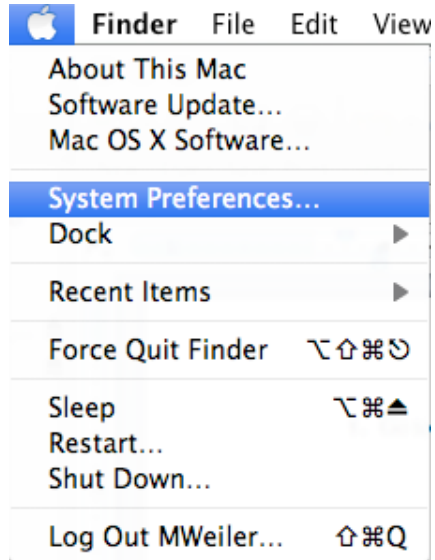


How to Add a Printer (OSX 10.6.x)

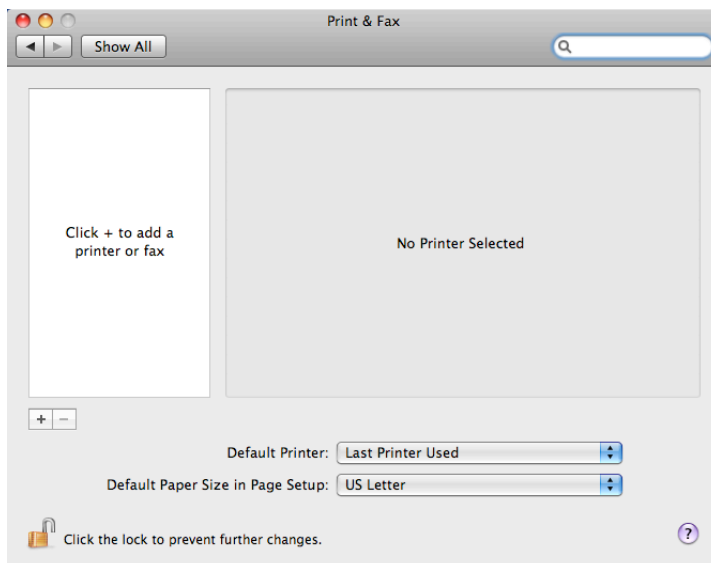
1. Go to the apple in upper left corner of the menu bar. Select **System Preferences**.



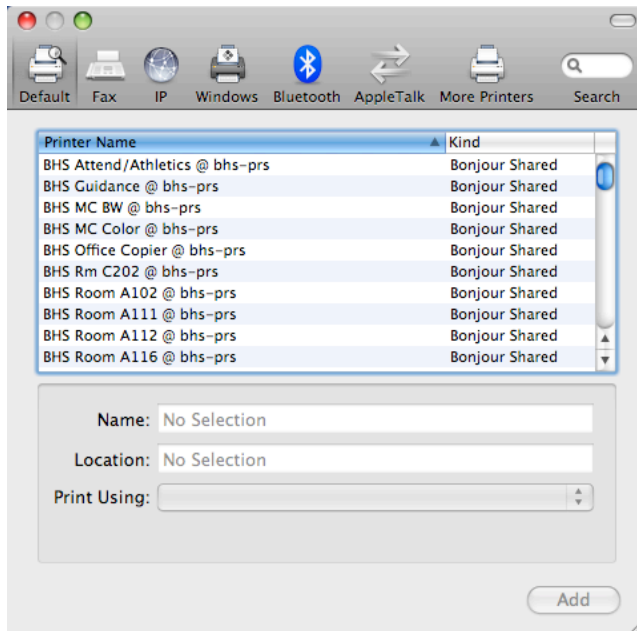
2. When System Preferences opens, select the **Print & Fax** icon.



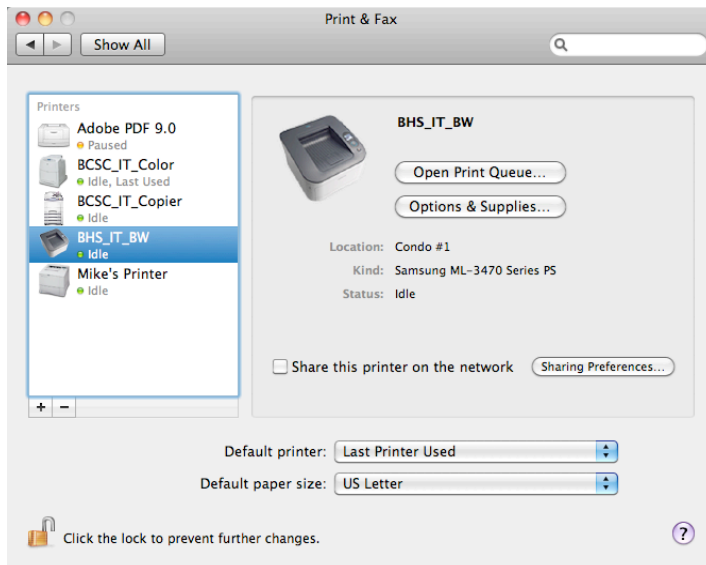
3. Select the (+) button.



4. Verify that **“Default”** is selected. From the printer list select the printer that you would like to add. It will have the words **“Bonjour Shared”** to the right of the name. Make sure it also has the print model listed in the **Print Using** field. Select **“Add”**.



5. You will now see that it has been added to a list. Verify that the **“Share this printer on the network”** is unchecked. Close System Preferences by clicking the red **“bubble”** in the upper left of the Print and Fax window.



You are now finished adding your printer. Repeat step 3-6 to add multiple printers.