



BPS Motto

Be Responsible
Be Respectful
Be Safe

Upcoming Events

- September 1** – Labor Day (No School)
- September 2** – Staff Professional Development (No students/No School)
- September 9** – PTO meeting in our conference room (6:00 p.m.)
- September 10** – September birthday lunch celebration
- September 11** – “Patriot Day”!
Wear **Red**, White and **Blue**
- September 17** – Wear **Red**, White and **Blue** again to celebrate Constitution Day
- September 22** – Staff Professional Development (No students/No School)
- September 25** – Versailles Pumpkin Show Prince & Princess Contest (7:00 p.m.)
- September 28** – Applefest Royalty Pageant (1:00 p.m.)

From Mr. Stoneking

Students are welcome to join the BPS staff each Friday in wearing “Bulldog” attire or blue and white. We want to show our “Bulldog” pride each week!

We want to thank all of our families for a smooth transition into the 2025-2026 school year. We truly appreciate your support and dedication.

Our K-2 students are finishing up their beginning of the year benchmark testing through mCLASS. mCLASS is an all-in-one system for Science of Reading-based universal screening, dyslexia screening, and progress monitoring. Assessed through DIBELS 8th Edition, mCLASS helps measure and strengthen the foundational skills that all students need to become confident readers. DIBELS (Dynamic Indicators of Basic Early Literacy Skills) is a set of procedures and measures for assessing the acquisition of early literacy skills in kindergarten through third grade. See the document attached for more information about DIBELS testing. We will share beginning of the year parent reports after testing is complete.

From Mrs. Essick

Are you connected to Class Dojo? Make sure you join in order to receive real-time behavior updates as well as classroom information!

Safety:

Continue to help reinforce the importance of safety. We teach students to NEVER open doors for anyone. It is highly important to teach fire safety and severe weather safety at home.

From our PTO

Our Walk-a-Thon online donation site is LIVE. **Please donate by going [here](#) and feel free to share the link with others!!** We also accept cash/checks that should be placed in your student’s school-issued envelope. The BPS Walk-a-thon is Thursday, September 11th. Our goal as a school is to raise \$12,000. If every student raises \$24, we will surpass our goal. See the attached flyer for more information!

During the walk, our students will vote for teachers with whom they wish to receive a pie in the face by placing a ticket in that teacher’s bucket. We will have a “Pie in the Face” convocation in our gym on Thursday, October 2nd at 2:00 p.m.

Connect with BPS

Follow us on [Facebook](#) and [Instagram](#)

Follow us on X: [@Batesville_BPS](#).

Connect with us on our [website!](#)

760 State Road 46

T: (812) 934-4509

Batesville, IN 47006

F: (812) 933-0936



The September birthday lunch celebration is on September 10th

SEPTEMBER 2025

BATESVILLE PRIMARY SCHOOL

USDA IS AN EQUAL OPPORTUNITY
EMPLOYER AND PROVIDER
MENU SUBJECT TO CHANGE
WITHOUT NOTICE

Monday

Tuesday

Wednesday

Thursday

Friday

1

LABOR DAY
NO SCHOOL

2

STAFF
PROFESSIONAL
DAY

3

Cereal Bar
Fruit & Juice & Milk
Cheese Pizza
Green Beans
Sweet Corn
Fruit & Milk

4

Sausage Patty & Biscuit
Fruit & Juice & Milk
Chicken Nuggets
Sweet Peas
Baked Beans
Fruit & Milk

5

French Toast
Fruit & Juice & Milk
Mini Corn Dogs
Baby Carrots
Fresh Veggies
Fruit & Milk

8

Cereal & Yogurt
Fruit & Juice & Milk
Chicken Tenders
Sweet Corn
Fresh Veggies
Fruit & Milk

9

Breakfast Pizza
Fruit & Juice & Milk
Salisbury Steak
Mashed Potatoes
Green Beans & Roll
Fruit & Milk

10

Cereal Bar
Fruit & Juice & Milk
Breaded Cheese Sticks
Side Salad
Steamed Broccoli
Fruit & Milk

11

Sausage Patty & Biscuit
Fruit & Juice & Milk
Hamburger On Bun
French Fries
Baked Beans
Fruit & Milk

12

French Toast
Fruit & Juice & Milk
Spaghetti & Meat sauce
Fresh Veggies
Garlic Bread
Fruit & Milk

15

Cereal & Yogurt
Fruit & Juice & Milk
Chicken Smackers
Green Beans
Fresh Veggies
Fruit & Milk

16

Breakfast Pizza
Fruit & Juice & Milk
Pull Apart Pizza
Sweet Corn
Broccoli
Fruit & Milk

17

Cereal Bar
Fruit & Juice & Milk
Ham & Cheese on Bun
Tater Tots
Mix Vegetables
Fruit & Milk

18

Sausage Patty & Biscuit
Fruit & Juice & Milk
Walking Taco & Chips
Lettuce & Cheese & Salsa
Fresh Veggies & Beans
Fruit & Milk

19

French Toast
Fruit & Juice & Milk
Mini Cheese Calzones
Side Salad
Peas
Fruit & Milk

22

STAFF
PROFESSIONAL
DAY

23

Breakfast Pizza
Fruit & Juice & Milk
Hot Dog on Bun
Fresh Veggies
Baked Beans
Fruit & Milk

24

Cereal Bar
Fruit & Juice & Milk
Sausage Gravy & Biscuit
Hash Browns
Baby Carrots & Yogurt
Fruit & Milk

25

Sausage Patty & Biscuit
Fruit & Juice & Milk
Chicken Patty on Bun
Steamed Broccoli
Baked Chips
Fruit & Milk

26

French Toast
Fruit & Juice & Milk
Country Steak
Mashed Potatoes
Green Beans & Roll
Fruit & Milk

29

Cereal & Yogurt
Fruit & Juice & Milk
Cheese Pizza
Green Beans
Fresh Veggies
Fruit & Milk

30

Breakfast Pizza
Fruit & Juice & Milk
Turkey Sandwich
Baby Carrots
Potato Smiles
Fruit & Milk

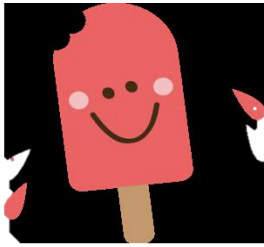
SNACKS: Monday-Tiger Bites Tuesday-Goldfish Wednesday-Applesauce Thursday-Sports Bites Friday-Cheez-its

BULLDOG BOX (1st and 2nd Grade): Ham or Turkey, Yogurt, Cheese, Fresh Veggies, a Ranch Cup, Fruit, Crackers, & Goldfish

Batesville Primary School PTO

Walkathon

SEPTEMBER 11, 2025



ALL students will enjoy POPSICLES for meeting our goal of raising \$12,000!!!

****Prize Packs for our Top 3 Fundraisers!****

Want to throw a pie at Mr. Stoneking or Mrs. Essick?

Top 2 Fundraisers will get this honor!!

3rd highest fundraiser & three random selections (one student from each grade level) for students who will throw a pie at 4 teachers!

Top Overall Class will receive an Ice Cream Party!

Donations can be made
online at:

<https://2025-bps-walk-a-thon-29384.cheddarup.com>

Or by submitting a
personal check
payable to BPS or cash
to school by September
11th



Thank You for supporting BPS PTO!

DIBELS Tips for Families

Why DIBELS?

DIBELS stands for Dynamic Indicators of Basic Early Literacy Skills. DIBELS is a series of short, quick assessments that some schools use to determine if students may be struggling with reading and need additional help. Teachers use DIBELS to inform their reading instruction. In other words, DIBELS tells teachers if students are at risk in reading and the type of help they may need.

What are Risk Categories?

Results of DIBELS subtests are categorized according to the risk, or likelihood, that students will meet end-of-year grade-level goals in reading. The categories were determined based on research in which DIBELS and end-of-year reading tests were administered to many students across the country.

Blue - Negligible risk: Students with negligible risk are on track for reading success and should continue to receive the instruction they are getting – sometimes called “Core Support.” We might call these students “Above Benchmark.”

Green - Minimal risk: Students with minimal risk are on track for reading success and should continue receiving the instruction that they are getting – sometimes called “Core Support.” We might call these students “At Benchmark.”

Yellow - Some risk: Students with some risk may be struggling with one or more components of reading. They need additional instruction, usually in a small group setting. Their progress should be monitored in the area in which they are struggling. In other words, these students need “Strategic Support.”

Red - At risk: Students at risk are struggling with reading, either scoring well below the benchmark or struggling with more than one component of reading. They need extra instruction in a small group or one-on-one setting. Their progress should be monitored in the areas in which they are struggling. In other words, these students need “Intensive Support.”

What About Percentiles?

First, percentiles are not like grades. If your child’s score is at the 40th percentile, that’s not the same as getting 40% on an assignment at school. If your child’s score is at the 40th percentile on DIBELS that means they scored as well as or better than 40% of students in the same grade at the same time of year. Scoring 40% on an assignment means your child got 40% of the points possible on that assignment.

Most students who fall in the 40th percentile or above on DIBELS are in the minimal or negligible risk categories. That means with regular instruction in reading, they are likely to be a successful reader.

Sometimes percentiles can be confusing if your child is a very good reader – say in the 90th percentile for Oral Reading Fluency Words Correct – but has a much lower percentile in Accuracy – say the 43rd percentile. Many students have excellent accuracy (99-100%) so even if your child has very good accuracy, their percentile could look lower than you expect because most students are also very accurate. Rest assured, in second grade and beyond, if your student's accuracy is high – say above 96% – the percentile on accuracy is not cause for concern.

Should I Be Worried if My Student is at Risk?

The best answer we can provide is maybe. If your child is at risk or at some risk based on their DIBELS scores, there is reason to be watchful. We recommend talking with your child's teacher. Here are some things to ask about:

- The instruction your child is receiving.
- The intervention provided for students who struggle with reading.
- How they monitor students' progress in reading.
- How you can support your student's progress.

Partnering with the school is one of the best ways to ensure your student's success in reading.

My Student Failed DIBELS! What Should I Do?

Don't panic! DIBELS is an indicator of risk, but it's not a test with a grade. Put another way, students cannot "fail" DIBELS. DIBELS gives teachers information, so they know how to proceed with instruction. It can be thought of as one indicator of reading health, just like taking your student's temperature is an indicator of their physical health. If your student is "at risk" or "at some risk" that tells you and the teacher that your student needs additional or more explicit reading instruction.

Resources for Parents

From the *University of Oregon DIBELS* Website

- The Parent Guide to DIBELS Assessment offers information on the different DIBELS measures, what is being assessed, and what they mean
<https://dibels.uoregon.edu/sites/dibels1.uoregon.edu/files/2021-06/dibelsparentguide.pdf>

The *National Center on Improving Literacy* offers resources for families to support their student's reading progress.

- Families and Schools Partnering for Children's Literacy Success Implementation Toolkit:
<https://improvingliteracy.org/kit/families-and-schools-partnering-childrens-literacy-success>
- Parents & Families Page: <https://improvingliteracy.org/family>
- Understanding Screening: Overall Screening and Assessment brief and infographic:
<https://improvingliteracy.org/brief/understanding-screening-overall-screening-and-assessment>

Although written for school leaders such as principals, *The Lead for Literacy Center* also offers resources that can help families understand and support their student's reading progress.

- Increasing Instructional Intensity Across Tiers of Support brief and infographic:
<https://leadforliteracy.org/briefs/increasing-instructional-intensity-across-tiers-support>

Terminology

Assessment: A process of collecting information.

Benchmark: A standard, or point of reference, against which other similar things can be compared.

Progress Monitoring: The frequent, ongoing assessment of a student's progress toward the goals of an intervention.

Risk: The chance that a student may not be on track to meet grade level goals in reading.

Screening: Short processes to find students who need help in reading, writing, spelling, or math.