
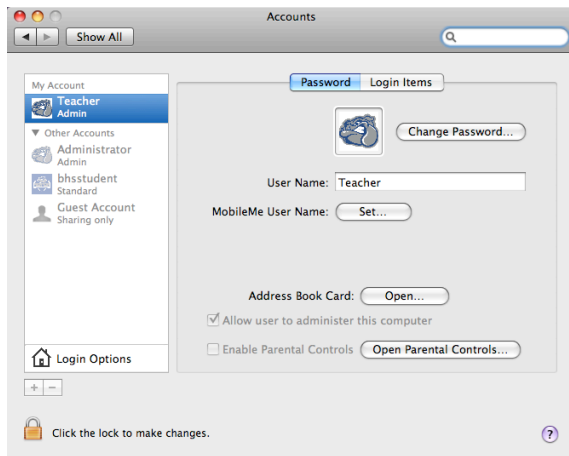


Changing Machine Password

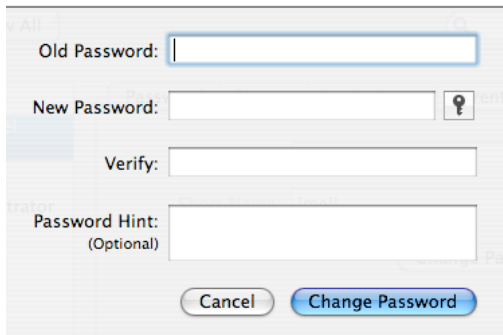
1. Select the  and then “System Preferences”.
2. In “System Preferences” choose “Accounts”.



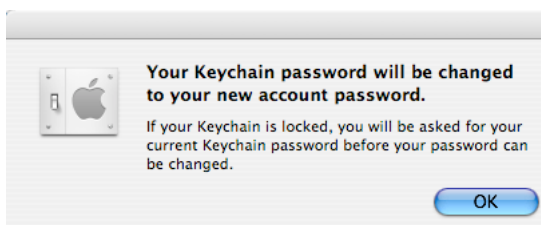
3. Select “Change Password”.



4. Enter your old password. Enter your new password and verify by entering your new one again. Do NOT enter a password hint! This hint appears after 3 failed login attempts and can become a security hole if something is entered. Click “Change Password” when finished.



5. You may get a message like below if you do, click **ok**. If not your password change is complete.



You have now successfully changed your computer password.