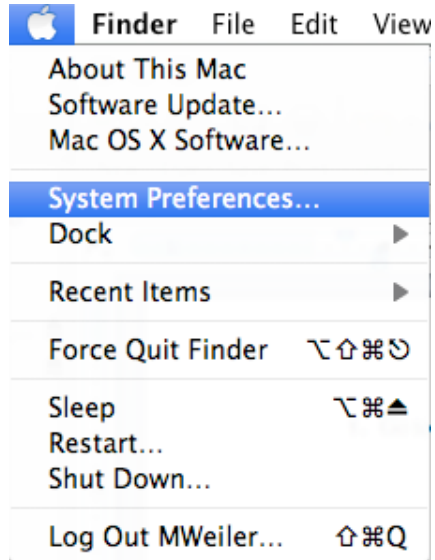


# How to Add a Printer (OSX 10.5.x)

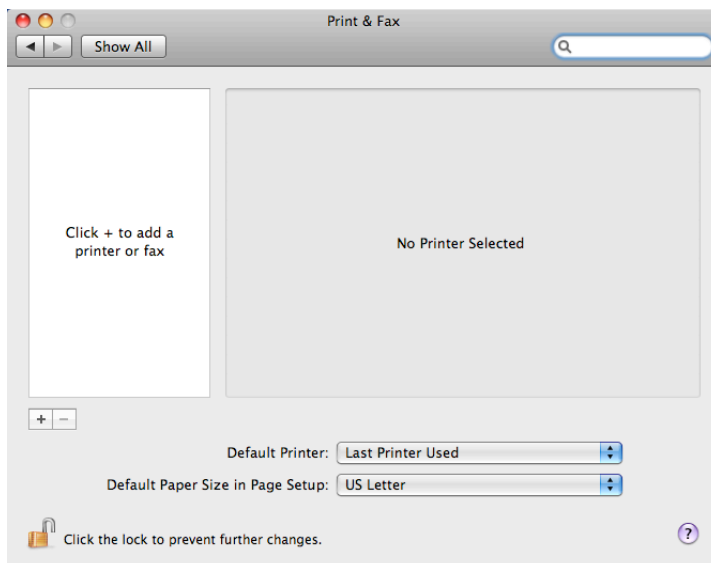
1. Go to the apple in upper left corner of the menu bar. Select **System Preferences**.



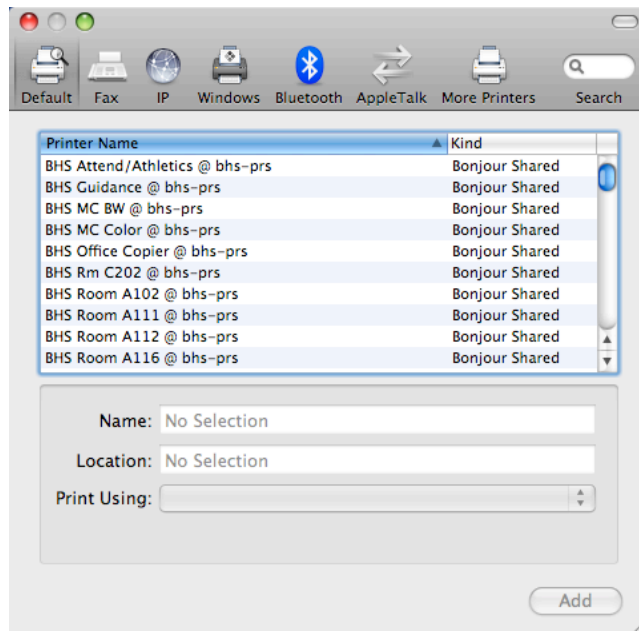
2. When System Preferences opens, select the **Print & Fax** icon.



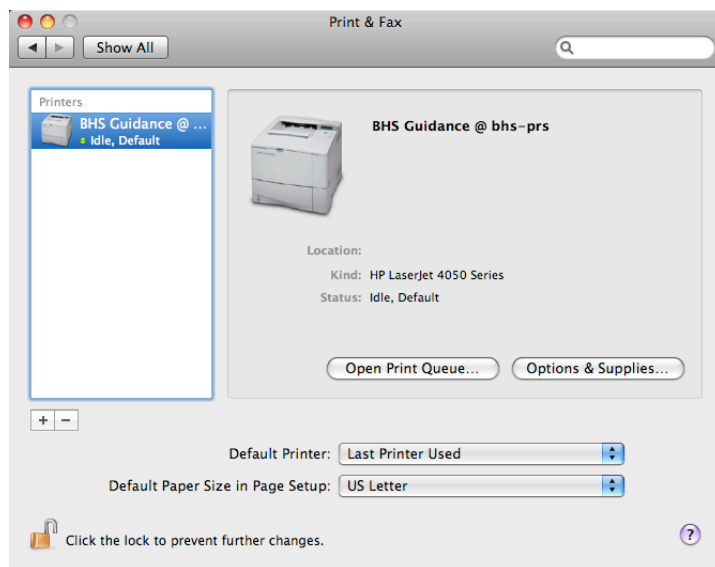
3. Select the (+) button.



- From the printer list select the printer that you would like to add. It will have the words “Bonjour Shared” to the right of the name. Make sure it also has the print model listed in the **Print Using** field. Select “Add”.



- You will now see that it has been added to a list. Close System Preferences by clicking the red “bubble” in the upper left of the Print and Fax window.



**You are now finished adding your printer. Repeat step 3-6 to add multiple printers.**